



Home Office

# Border & Immigration Agency

## ACCESSION MONITORING REPORT A8 COUNTRIES

MAY 2004 – JUNE 2007

**DWP** Department for  
Work and Pensions

 **HM Revenue  
& Customs**

 **Communities  
and Local Government**

A joint online report between the Border and Immigration Agency, Department for Work and Pensions, HM Revenue and Customs and Communities and Local Government

© Crown Copyright 2007

This publication is not available in printed format

# CONTENTS

## INTRODUCTION

Background.....	2
Key findings .....	2
Note on the publication.....	3
Note on Worker Registration Scheme data.....	3
Technical notes.....	3
Links to useful websites .....	4

## WORKER REGISTRATION SCHEME

### Applicants and applications to the WRS

1. Applicants.....	5
1a. Applications .....	7

### Profile of registered workers

2. Nationality of applicants .....	8
3. Age and Gender of registered workers .....	10
4. Dependants of registered workers .....	11
5. Sectors in which registered workers are employed.....	12
6. Occupations in which registered workers are employed.....	14
7. Registered workers' hours of work and wages .....	16
8. Proportion of registered workers in temporary/permanent employment.....	16
9. Intended Length of Stay .....	16
10. Geographical distribution of employers of registered workers .....	17
11. Geographical distribution of employers of registered workers by sector .....	19
12. Nationality of registered workers by sector .....	21

## NATIONAL INSURANCE NUMBERS

13. National Insurance Numbers allocated and purpose of allocation.....	23
14. National Insurance Number applications by region.....	24

## BENEFITS AND TAX CREDITS

15. Applications for tax-funded, income-related benefits .....	25
16. Nationality of applicants for tax-funded, income-related benefits .....	26
17. Applications for tax-funded, income-related benefits by region .....	27
18. Applications for Child Benefit .....	28
19. Applications for Tax Credits .....	29

## HOUSING AND HOMELESSNESS SUPPORT

20. Local Authority Lettings.....	30
21. Homelessness assistance.....	31

## ANNEX A

All occupations in which registered workers are employed.....	32
---	----

# INTRODUCTION

## BACKGROUND

On 1 May 2004, ten countries – Cyprus, Czech Republic, Estonia, Hungary, Latvia, Lithuania, Malta, Poland, Slovakia and Slovenia – joined the European Union (EU). From that date, nationals of Malta and Cyprus have had full free movement rights and rights to work, throughout the EU. Prior to enlargement, existing EU member states had the right to regulate access to their labour markets by nationals of the other eight countries – the ‘Accession 8’ or ‘A8’. The UK Government put in place transitional measures to regulate A8 nationals’ access to the labour market (via the Worker Registration Scheme) and to restrict access to benefits.

The data in this publication are based on Management Information, are provisional and may be subject to change. The data are **not** National Statistics.

## KEY FINDINGS

- Nationals from the A8 countries continue to come to the UK to work, contributing to the success of the UK economy, while making few demands on our welfare system.
- In total there were 50,000 initial applicants to the Worker Registration Scheme (WRS) in Quarter 2 (Q2) 2007, compared to 52,000 in Q1 2007, and 56,000 in Q2 2006.
- A8 workers are continuing to go where the work is, helping to fill the gaps in our labour market, particularly in administration, business and management, hospitality and catering, agriculture, manufacturing and food, fish and meat processing. In Q2 2007, 41% of registered workers applied to work in administration, business and management (which includes employment agencies), compared to 25% in 2004.
- In many cases, A8 nationals are supporting the provision of public services in communities across the UK. In the twelve months up to 30 June 2007, 2,400 A8 nationals have registered as bus, lorry and coach drivers, 5,100 as care workers, 700 as teachers, researchers and classroom assistants, 100 as dental practitioners (including hygienists and dental nurses), and 1,000 as GPs, hospital doctors, nurses and medical specialists.
- Workers applied to work for employers based all over the UK, with the proportion applying to London falling to 10% in Q2 2007 from 15% in Q1 2005, but relatively steady over the last year at 11% in Q1 2007 and 9% in Q2 2006. As the proportion applying elsewhere has increased, Anglia and the Midlands have now overtaken London, with 14% and 13% respectively of the total registered workers in Q2 2007.
- 97% of workers applying to the WRS applied to work full time.
- 98% of applications for National Insurance numbers made by A8 nationals between May 2004 and June 2007 were for employment purposes.
- The vast majority of workers registering since May 2004 were young: 82% aged between 18 and 34. 93% of workers stated that they had no dependants living with them in the UK when they registered and only 4% had dependants under the age of 17 with them.
- The numbers of A8 nationals applying for tax-funded income-related benefits and housing support remain low. For example, 3,785 applications for Income Support and Jobseeker's Allowance were processed in Q2 2007, of which 936 were allowed to proceed for further consideration, compared to 3,442 and 848 in Q1 2007 and 1,533 and 345 in Q2 2006.

## NOTE ON THE PUBLICATION

This is the twelfth of a series of quarterly reports based on provisional Management Information collected through the WRS and manual monitoring of applications for National Insurance numbers, claims for benefits, applications for tax credits and applications for housing and homelessness assistance. The figures published in the earlier reports have been updated to include applications that were previously outstanding. The data are presented in quarters and annually, except for 2004, which has been shown as a total for the part year May to December 2004.

## NOTE ON WORKER REGISTRATION SCHEME DATA

Nationals of the A8 countries who wish to take up employment in the UK for a period of at least a month are generally required to register with the WRS. The statistics in this publication are only of those who have registered with the Home Office to work as employees in the UK. Workers who are self-employed do not need to register and are therefore not included in these figures; there may also be other workers from the accession countries who for one reason or another do not register and are thus also not included in these figures. The data from the WRS provided here are data on applicants to the scheme rather than applications (with the exception of Table 2 and Section 1a). Applicants must register more than once if they are employed by more than one employer. They must also re-register if they change employer. Each application to the WRS therefore represents one job, not one applicant. To avoid counting applicants more than once, each applicant is represented only once in this report, with information relating to the **first** job for which he/she registered.

Data are provisional and an estimated 885 applications from the period remain outstanding, of which 815 were received in Q2 2007. In these cases, final decisions had not been issued at the time of producing this report. In this report, outstanding applications are included only in Table 1 in the 'Outstanding' column.

All WRS data in this report are sorted according to the date the applicant applied. The 'date applied' is the date the applicant puts on the application form. There will be cases in which there is a delay between when the forms are filled in or posted and when the applications are received by the Home Office.

Sectors and our listing of occupations in Annex A (which do not conform to the National Statistics Standard Industry and Standard Occupational Codes) are currently being reviewed with the aim of implementing recognised standard terminology.

The number of applicants to the WRS does **not** represent a measurement of net migration to the UK (inflows minus outflows). Rather, it is a gross (cumulative) figure for the number of workers applying to the WRS. The figures are not current: an individual who has registered to work and who leaves employment is not required to de-register, so some of those counted will have left the employment for which they registered and indeed some are likely to have left the UK. Figures for net migration to the UK are published by the Office for National Statistics (ONS). The International Migration Report 2005, published on 2 November 2006, estimates 64,000 more A8 citizens migrated into the UK for at least a year than left in 2005. This shows an increase of 31% compared with an estimated 49,000 in 2004. This is partly explained by the fact that in 2004 A8 nationals had the right of free-movement to the UK from May, whereas in 2005 this right could be exercised for the full twelve month period. For further information, please click on the following link.

[http://www.statistics.gov.uk/downloads/theme\\_population/MN\\_no32.pdf](http://www.statistics.gov.uk/downloads/theme_population/MN_no32.pdf)

## TECHNICAL NOTES

- All WRS figures (other than percentages) shown in tables 1 to 11 and the annex are rounded to the nearest five. The figures in tables 12 to 20 are not rounded.
- † indicates 1 or 2.
- - indicates nil.
- Because of rounding, figures may not sum to the totals shown. All percentages and charts are calculated from non-rounded figures.
- Since accession took place on 1 May 2004, the data quoted for 2004 are only for the part year from May to December, so care should be taken when comparing this with subsequent periods.

## LINKS TO USEFUL WEBSITES

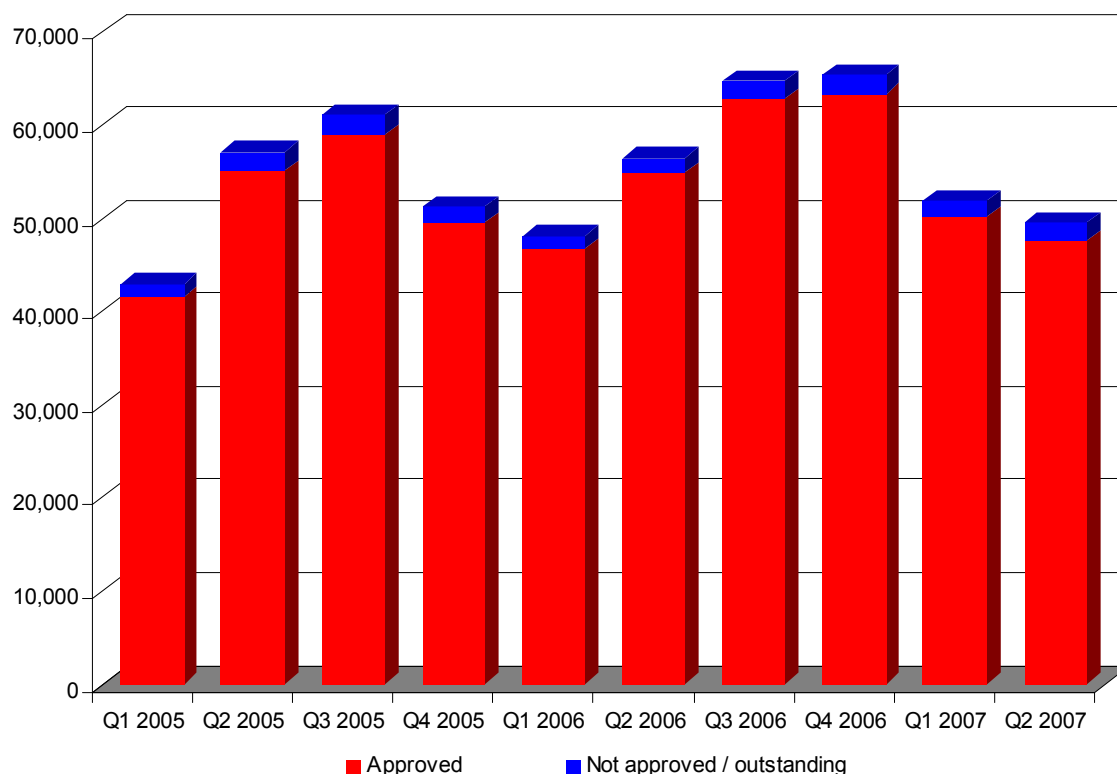
- Working in the UK, information about WRS:  
[www.workingintheuk.gov.uk](http://www.workingintheuk.gov.uk)
  - Link to the Worker Registration Form and guidance:  
[http://www.workingintheuk.gov.uk/working\\_in\\_the\\_uk/en/homepage/schemes\\_and\\_programmes/worker\\_registration.html](http://www.workingintheuk.gov.uk/working_in_the_uk/en/homepage/schemes_and_programmes/worker_registration.html)
  - Fresh Talent: Working in Scotland Scheme:  
[http://www.scotlandistheplace.com/stitp/sitp\\_display\\_noflash.jsp?pContentID=276&p\\_applic=CCC&pElementID=165&pMenuID=3&p\\_service=Content.show&](http://www.scotlandistheplace.com/stitp/sitp_display_noflash.jsp?pContentID=276&p_applic=CCC&pElementID=165&pMenuID=3&p_service=Content.show&)
  - HM Revenue & Customs (HMRC) Right To Reside In The United Kingdom:  
<http://www.hmrc.gov.uk/manuals/tctmanual/TCTM02001.htm>  
<http://www.hmrc.gov.uk/taxcredits/residence-rules.htm>
  - Communities and Local Government (CLG):  
<http://www.communities.gov.uk/>
  - Department for Work and Pensions (DWP) – The impact of free movement of workers from Central and Eastern Europe on the UK labour market:  
<http://www.dwp.gov.uk/asd/asd5/wp29.pdf>
  - DWP – National Insurance Number Allocations to Overseas Nationals Entering the UK 2006:  
[http://www.dwp.gov.uk/asd/asd1/niall/nino\\_allocation.asp](http://www.dwp.gov.uk/asd/asd1/niall/nino_allocation.asp)
  - Accession Monitoring Report:  
[http://www.ind.homeoffice.gov.uk/aboutus/reports/accession\\_monitoring\\_report](http://www.ind.homeoffice.gov.uk/aboutus/reports/accession_monitoring_report)
  - The European Community Association Agreements Statistics for Bulgaria, Romania and Turkey:  
<http://www.ind.homeoffice.gov.uk/aboutus/reports/eeas>
  - Bulgarian and Romanian Accession Statistics:  
<http://www.ind.homeoffice.gov.uk/aboutus/reports/bulgarianandromanianaccession>
  - Home Office – Research, Development and Statistics report on Employers' use of migrant labour:  
<http://www.homeoffice.gov.uk/rds/pdfs06/rdsolr0406.pdf>
  - The Office for National Statistics (ONS):  
<http://www.statistics.gov.uk/>
  - ONS statistics on International Migration (MN Series):  
<http://www.statistics.gov.uk/statbase/Product.asp?vlnk=507&More=N>
  - ONS International Passenger Survey Travel Trends (annual data on travel to/from the UK):  
<http://www.statistics.gov.uk/StatBase/Product.asp?vlnk=1391&Pos=&ColRank=1&Rank=272;>
- ONS Visits to the UK from the enlarged EU (monthly data on EU travel to the UK from May 2004 to December 2006):  
<http://www.statistics.gov.uk/statbase/Product.asp?vlnk=12222>

# WORKER REGISTRATION SCHEME (WRS)

## APPLICANTS AND APPLICATIONS TO THE WRS

### 1. Applicants<sup>1</sup>

Chart 1 – Applicants by quarter of application, January 2005 – June 2007



- A cumulative total of 683,000 applicants have applied to register on the Worker Registration Scheme (WRS) between 1 May 2004 and 30 June 2007, but this does not indicate the number of long term migrants of A8 workers into the UK as most intend to come for short periods.
- In total there were 50,000 applicants in Q2 2007, of whom 48,000 (96%) were issued with Worker Registration certificates and cards, compared to 52,000 and 50,000 (97%) in Q1 2007 and 56,000 and 55,000 (97%) in Q2 2006.
- Applications, which previously peaked in the summer months, rose to their highest levels in October and November 2006, before falling to the lower levels seen in December to February.
- The monthly total applications for April to June 2007 were 14,000, 18,000 and 17,000 respectively. The total for Q2 2007 was 2,000 lower than in Q1 2007 and 7,000 lower than in Q2 2006.

<sup>1</sup> The data for applicants are recorded by the date on the application form, the standard statistical approach. However, as applications continue to be received dated under previously published quarters, the number of applications will show increases for these quarters in subsequent reports.

**Table 1 – Applicants, by quarter and year of application, May 2004 - June 2007**

		Number of applicants					
Period		Approved	Refused	Exempt	Withdrawn	Outstanding	Total
<b>2004</b>	<b>Total</b>	<b>125,880</b>	<b>1,250</b>	<b>640</b>	<b>6,780</b>	<b>0</b>	<b>134,550</b>
<b>2005</b>	<b>Total</b>	<b>204,965</b>	<b>1,800</b>	<b>310</b>	<b>5,250</b>	<b>0</b>	<b>212,320</b>
<b>2006</b>	Q1	46,765	320	30	995	0	<b>48,110</b>
	Q2	54,900	285	40	1,255	0	<b>56,480</b>
	Q3	62,855	315	25	1,585	5	<b>64,785</b>
	Q4	63,330	275	110	1,600	5	<b>65,320</b>
<b>2006</b>	<b>Total</b>	<b>227,850</b>	<b>1,200</b>	<b>205</b>	<b>5,435</b>	<b>10</b>	<b>234,695</b>
<b>2007</b>	Q1	50,105	215	150	1,340	60	<b>51,875</b>
	Q2	47,595	160	115	815	815	<b>49,500</b>

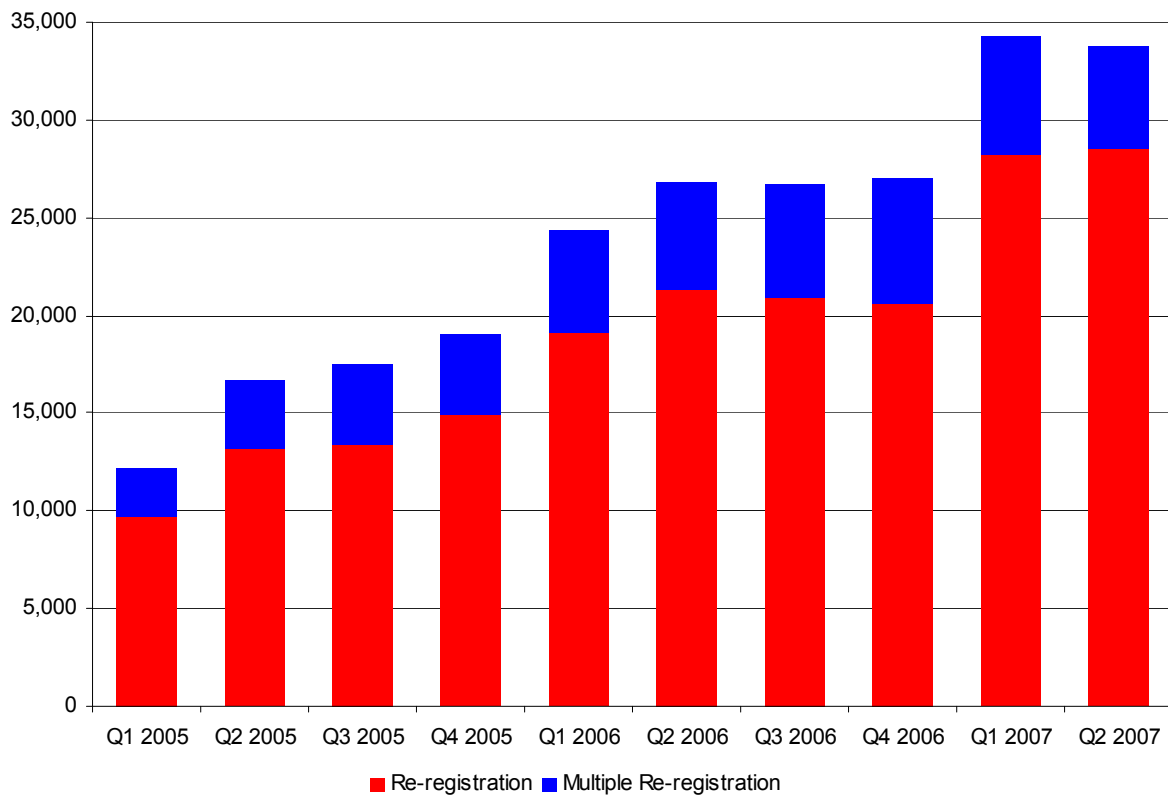
This table shows applicants rather than the number of applications made. The figures are for initial applications only (and do not include the 5,495 multiple applications, where an individual is doing more than one job simultaneously, or the 252,305 total re-registrations, where an individual has changed employers).

The total shown for 2004 is for the part year May to December.

Note: Please see Introduction: Technical Note on WRS data.

## 1a. Applications

Chart 2 – Total re-registrations, by quarter of application, January 2005 – June 2007



- A total of 83,000 initial applications and re-registrations, excluding outstanding applications, were made in Q2 2007, of which 81,000 (98%) were approved (i.e. the worker's employment was registered), compared to 86,000 and 84,000 (97%) in Q1 2007 and 84,000 and 82,000 (98%) in Q2 2006.
- Total applications since May 2004, include 200,000 applications to re-register (from those who have previously registered but have changed employer), 5,000 multiple registrations (from those working for more than one employer simultaneously), and 52,000 multiple re-registrations (from those registering for subsequent, additional jobs, or those who have left their employer and are re-registering for more than one job). These applications account for the difference between the number of applicants and the number of applications.
- Over the reporting period, the number of re-registrations was 29,000 in Q2 2007 compared to 28,000 in Q1 2007 and 21,000 in Q2 2006, continuing the trend this year for increased re-registrations.

Table 2 – Total re-registrations, by quarter and year of application, May 2004 - June 2007

Period		Re-registration	Multiple Re-registration	Total
2004	Total	10,130	3,855	13,990
2005	Total	51,355	13,945	65,300
2006	Q1	19,095	5,240	24,335
	Q2	21,270	5,565	26,835
	Q3	20,915	5,835	26,755
	Q4	20,535	640	21,175
2006	Total	81,820	23,095	104,915
2007	Q1	28,255	6,065	34,320
	Q2	28,595	5,190	33,785

The total shown for 2004 is for the part year May to December.

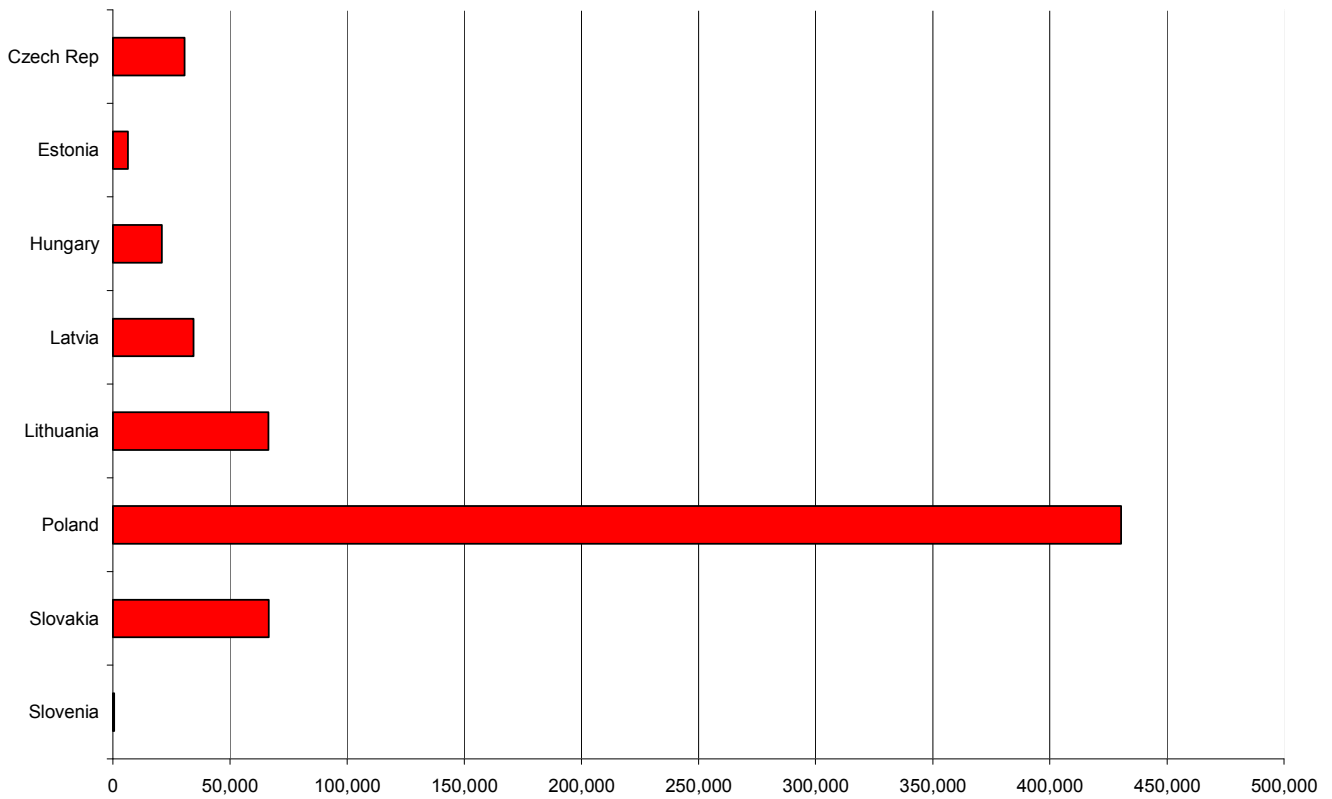
Note: Please see Introduction: Technical Note on WRS data



## PROFILE OF REGISTERED WORKERS

### 2. Nationality of applicants

Chart 3 – Nationality of approved applicants, May 2004 - June 2007



- In the period 1 May 2004 to 30 June 2007, the highest proportion of approved applicants were Polish (66% of the total), followed by Lithuanian (10%) and Slovak (10%).
- The percentage of Polish nationals in Q2 2007 was 71% compared to 71% in Q1 2007, 69% in Q2 2006, and 60% in Q2 2005.
- Only 595 Slovenian applications have been approved since May 2004, and this is too few to register in the above chart.

**Table 3 – Nationality of approved applicants, by quarter and year of application, May 2004 - June 2007**

Period		Number of applicants							
		Czech Rep	Estonia	Hungary	Latvia	Lithuania	Poland	Slovakia	Slovenia
<b>2004</b>	<b>Total</b>	<b>8,255</b>	<b>1,860</b>	<b>3,620</b>	<b>8,670</b>	<b>19,270</b>	<b>71,025</b>	<b>13,020</b>	<b>160</b>
<b>2005</b>	<b>Total</b>	<b>10,575</b>	<b>2,560</b>	<b>6,355</b>	<b>12,955</b>	<b>22,990</b>	<b>127,325</b>	<b>22,035</b>	<b>170</b>
<b>2006</b>	Q1	1,865	390	1,435	2,560	4,235	31,920	4,305	55
	Q2	2,045	340	1,595	2,790	4,470	38,125	5,490	40
	Q3	2,220	420	1,835	2,265	4,340	45,460	6,260	50
	Q4	2,215	325	2,190	1,880	4,015	46,975	5,690	40
<b>2006</b>	<b>Total</b>	<b>8,345</b>	<b>1,475</b>	<b>7,060</b>	<b>9,490</b>	<b>17,065</b>	<b>162,480</b>	<b>21,745</b>	<b>185</b>
<b>2007</b>	Q1	1,805	270	1,955	1,825	3,730	35,660	4,810	45
	Q2	1,660	200	1,955	1,480	3,380	33,905	4,980	40
<b>% of Q2 Total</b>		<b>3%</b>	<b>0%</b>	<b>4%</b>	<b>3%</b>	<b>7%</b>	<b>71%</b>	<b>10%</b>	<b>0%</b>

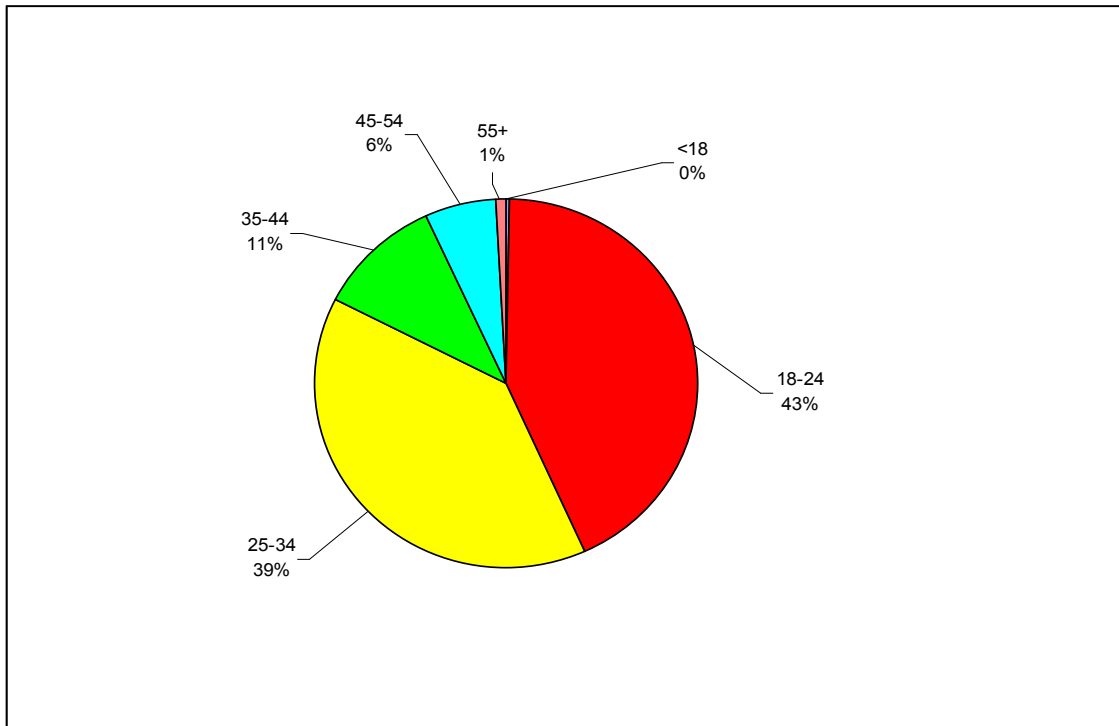
This table shows applicants approved rather than the total number of applications made. The figures are for initial applications only (not multiple applications, where an individual is doing more than one job simultaneously, or re-registrations, where an individual has changed employers).

The total shown for 2004 is for the part year May to December.

Note: Please see Introduction: Technical Note on WRS data.

### 3. Age and Gender of registered workers

Chart 4 – Age of registered workers, by percentage, May 2004 – June 2007



- Of those who applied between May 2004 and June 2007, 82% of registered workers were aged 18 – 34. In Q2 2007 this percentage was 80% and the percentage in the 35-44 age bracket remains at 11%, little changed from 12% in Q1 2007 and 10% in Q2 2006.
- The male to female ratio for those who applied between May 2004 and June 2007 is 58:42. In the latest quarter the ratio was 59:41.

Table 4 – Age of registered workers, by quarter and year of application, May 2004 – June 2007

		Number of registered workers								
Period		<18	18-24	25-34	35-44	45-54	55-64	65+	Others <sup>2</sup>	Total
<b>2004</b>	<b>Total</b>	<b>320</b>	<b>54,355</b>	<b>49,835</b>	<b>12,655</b>	<b>7,425</b>	<b>1,020</b>	<b>20</b>	<b>260</b>	<b>125,885</b>
<b>2005</b>	<b>Total</b>	<b>655</b>	<b>89,815</b>	<b>78,295</b>	<b>21,760</b>	<b>12,575</b>	<b>1,560</b>	<b>20</b>	<b>285</b>	<b>204,965</b>
<b>2006</b>	Q1	110	18,365	19,510	5,205	3,080	425	10	65	<b>46,765</b>
	Q2	175	23,330	21,780	5,665	3,420	445	5	75	<b>54,900</b>
	Q3	295	31,270	21,540	5,805	3,410	440	5	85	<b>62,850</b>
	Q4	160	26,760	25,275	6,510	3,965	575	5	75	<b>63,330</b>
<b>2006</b>	<b>Total</b>	<b>740</b>	<b>99,725</b>	<b>88,110</b>	<b>23,185</b>	<b>13,875</b>	<b>1,885</b>	<b>25</b>	<b>300</b>	<b>227,845</b>
<b>2007</b>	Q1	130	19,275	20,835	5,780	3,470	545	15	50	<b>50,105</b>
	Q2	205	18,885	18,985	5,470	3,450	520	10	65	<b>47,595</b>

This table shows registered workers rather than the number of applications made. The figures are for initial applications only (not multiple applications, where an individual is doing more than one job simultaneously, or re-registrations, where an individual has changed employers).

The total shown for 2004 is for the part year May to December.

Note: Please see Introduction: Technical Note on WRS data.

<sup>2</sup> This includes applicants who did not state their age and, for data quality reasons, applicants who submitted an application form with a date of birth which would make them less than 15 years old or above 72 years old.

#### 4. Dependants of registered workers<sup>3</sup>

- A small minority (7%) of registered workers who applied between May 2004 and June 2007 declared that they had dependants living with them in the UK when they applied. Amongst those who did have dependants, the average number of dependants was 1.5.
- The number of dependants as a proportion of the number of registered workers was 14% in Q2 2007 compared to 15% in Q1 2007 and 12% in Q2 2006.

**Table 5 – Registered workers' dependants<sup>4</sup>, by quarter and year of application, May 2004 - June 2007**

Period		Total registered workers	Registered workers with dependants	Number of dependants		
				Under 17	17 and over	Total
2004	<b>Total</b>	<b>125,880</b>	<b>5,485</b>	<b>4,455</b>	<b>4,070</b>	<b>8,525</b>
2005	<b>Total</b>	<b>204,965</b>	<b>10,695</b>	<b>8,510</b>	<b>7,775</b>	<b>16,285</b>
2006	Q1	46,765	3,690	3,060	2,525	<b>5,590</b>
	Q2	54,900	4,215	3,495	2,815	<b>6,310</b>
	Q3	62,855	5,190	4,365	3,450	<b>7,815</b>
	Q4	63,330	6,700	5,565	4,615	<b>10,185</b>
2006	<b>Total</b>	<b>227,850</b>	<b>19,790</b>	<b>16,490</b>	<b>13,410</b>	<b>29,900</b>
2007	Q1	50,105	5,075	4,410	3,350	<b>7,760</b>
	Q2	47,595	4,200	3,765	2,695	<b>6,460</b>

This table shows registered workers rather than the number of applications made. The figures are for initial applications only (not multiple applications, where an individual is doing more than one job simultaneously, or re-registrations, where an individual has changed employers).

The total shown for 2004 is for the part year May to December.

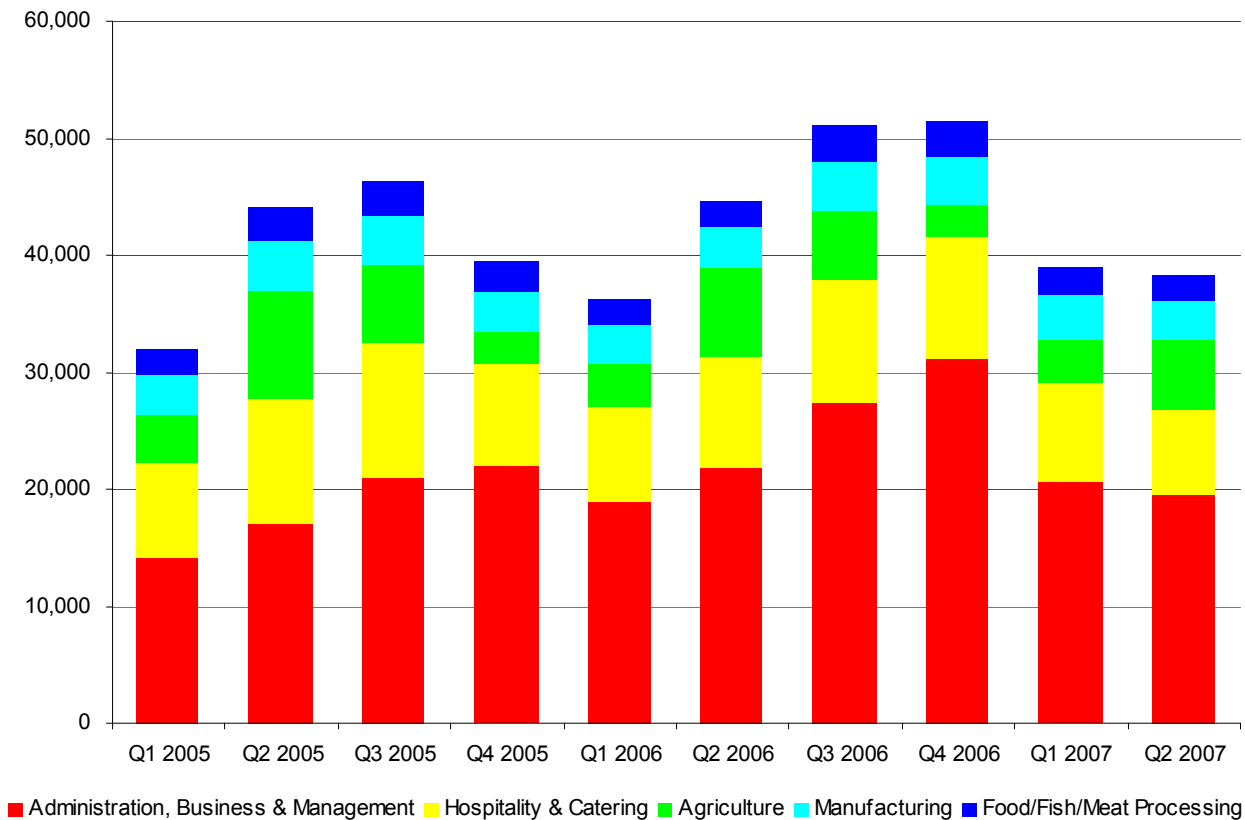
Note: Please see Introduction: Technical Note on WRS data.

<sup>3</sup> These data are derived from applicants' responses to the question on the WRS application form: *If your dependants (children and/or spouse or partner) are living with you in the UK, how many of them are: Aged 16 or under? and Aged 17 or above?* The Home Office does not verify these responses.

<sup>4</sup> It is likely that there is some 'double counting' of dependants, in the sense that some of those recorded as dependants (particularly older children and spouses) may also have registered in their own right to work in the UK.

## 5. Sectors<sup>5</sup> in which registered workers are employed

Chart 5 – Top 5 sectors in which registered workers are employed, by quarter of application, January 2005 – June 2007



- The top five sectors for registered workers, who applied between May 2004 and June 2007, were administration, business and management<sup>6</sup> (37%), hospitality and catering (19%), agriculture (11%), manufacturing (7%) and food, fish and meat processing (5%).
- The proportion of workers working for employers in the administration, business and management group<sup>6</sup> remains steady at 41% in Q2 2007, unchanged from the previous quarter and increased from 40% in Q2 2006. Meanwhile, the proportion in hospitality and catering fell to 15% in Q2 2007 from 17% in Q1 2007 and Q2 2006.
- Agriculture rose to 13% in Q2 2007, reflecting the seasonal nature of the work, from 8% in the previous quarter, but lower than 14% in Q2 2006.

<sup>5</sup> Not equivalent to the ONS Standard Industry Codes.

<sup>6</sup> The majority of workers in the administration, business & management sector work for recruitment agencies and could be employed in a variety of occupations. For a full list of occupations please see Annex A of the report.

**Table 6 – Sectors<sup>7</sup> in which registered workers are employed, by quarter and year of application, May 2004 - June 2007**

Sector	Number of registered workers								
	2004 Total	2005 Total	2006				2006 Total	2007	
			Q1	Q2	Q3	Q4		Q1	Q2
Administration, Business & Management	31,235	74,485	18,970	21,845	27,335	31,070	99,220	20,685	19,430
Hospitality & Catering	34,310	38,550	8,105	9,440	10,630	10,500	38,675	8,380	7,345
Agriculture	16,905	22,700	3,755	7,655	5,830	2,655	19,900	3,770	6,040
Manufacturing	9,750	15,610	3,235	3,440	4,275	4,215	15,160	3,820	3,240
Food/Fish/Meat Processing	6,480	10,605	2,245	2,290	3,070	3,035	10,640	2,270	2,230
Health & Medical	5,550	10,935	2,795	2,235	2,515	2,385	9,935	1,985	1,515
Retail	5,355	8,760	1,975	2,115	2,670	3,160	9,920	2,330	1,955
Construction & Land	5,185	7,255	2,155	2,260	2,365	2,230	9,010	2,805	2,290
Transport	2,725	6,695	1,420	1,395	1,405	1,525	5,745	1,500	1,205
Entertainment & Leisure	2,190	3,675	615	910	1,040	590	3,155	615	805
Education & Cultural	1,490	1,920	595	400	495	560	2,050	540	430
Real Estate & Property	535	925	210	205	280	470	1,165	550	485
Financial Services	425	455	140	150	225	175	695	160	125
Computer Services	385	420	150	105	140	160	555	165	110
Extraction Industries	365	440	105	140	155	200	605	165	110
Security & Protection	345	550	120	130	150	155	555	130	95
Telecommunications	180	185	40	35	65	55	195	65	45
Sporting Activities	145	120	30	30	30	40	125	35	25
Utilities (Gas, Electricity, Water)	125	155	40	50	60	45	200	45	60
Government	80	125	25	30	35	60	145	50	25
Law-related Services	85	75	10	15	25	30	75	25	25
Not Stated	2,030	330	30	25	50	15	120	10	10
<b>Total</b>	<b>125,880</b>	<b>204,965</b>	<b>46,765</b>	<b>54,900</b>	<b>62,855</b>	<b>63,330</b>	<b>227,850</b>	<b>50,105</b>	<b>47,595</b>

This table shows registered workers rather than the number of applications made. The figures are for initial applications only (not multiple applications, where an individual is doing more than one job simultaneously, or re-registrations, where an individual has changed employers).

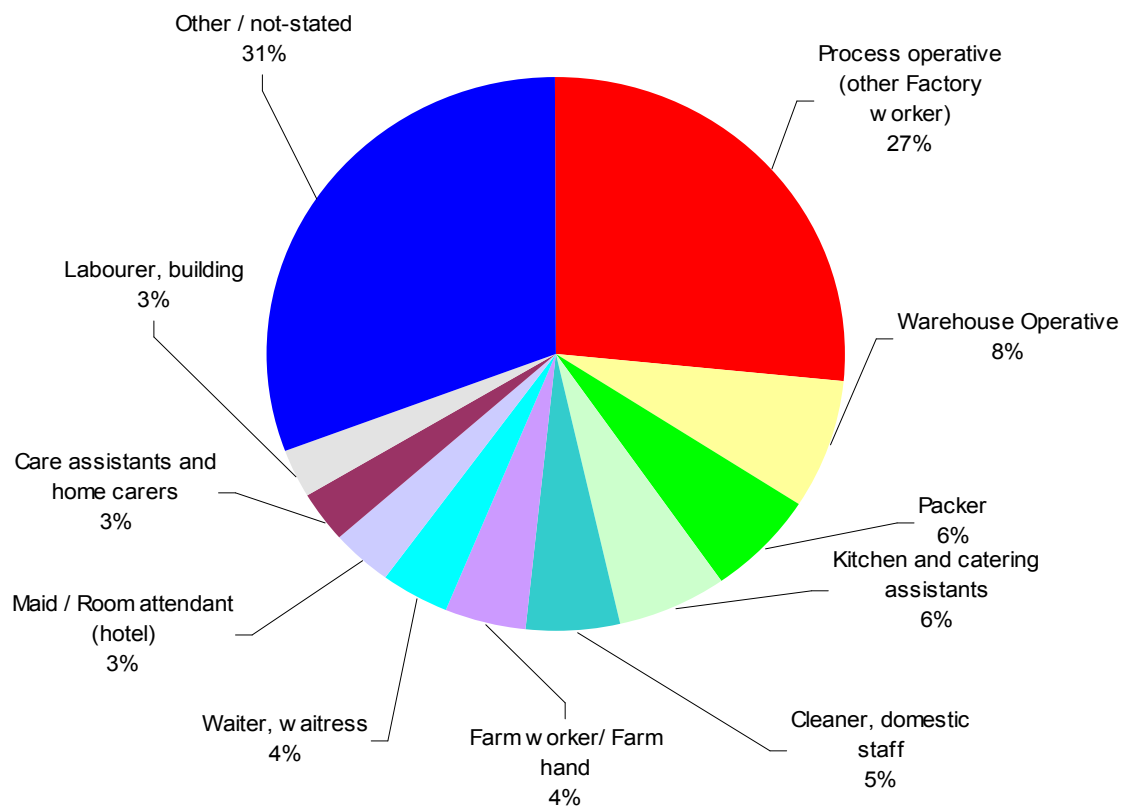
The total shown for 2004 is for the part year May to December.

Note: Please see Introduction: Technical Note on WRS data.

<sup>7</sup> Not equivalent to the ONS Standard Industry Codes.

## 6. Occupations<sup>8</sup> in which registered workers are employed

Chart 6 – Top 10 occupations in which registered workers are employed, July 2004 – June 2007  
(May/June 2004 data not available)



Note: Percentages indicate percentage of all workers registered, July 2004 to June 2007

- The top 20 occupations have remained largely consistent over the period.
- The biggest group of workers registered with the WRS is in general occupations (27%) classified as process operatives (other factory worker). This is followed by warehouse operatives (8%) and packers (6%).
- Please refer to Annex A for a full table of occupations of registered workers who applied between July 2004 and June 2007.

<sup>8</sup> Not equivalent to the ONS Standard Occupational Codes.

**Table 7 – Top 20 occupations in which registered workers are employed, by quarter and year of application, July 2004 – June 2007**

Sector	Number of registered workers								
	2004 Total	2005 Total	2006				2006 Total	2007	
			Q1	Q2	Q3	Q4		Q1	Q2
Process operative (other Factory worker)	17,970	53,265	12,485	14,005	17,360	20,070	63,915	14,445	13,555
Warehouse Operative	3,810	13,860	3,665	4,390	6,225	7,615	21,895	4,200	3,465
Packer	5,515	13,375	2,625	2,955	3,680	4,080	13,335	2,565	2,595
Kitchen and catering assistants	5,940	12,415	2,695	3,230	3,440	3,590	12,955	2,685	2,535
Cleaner, domestic staff	4,355	10,200	3,150	2,925	3,365	3,635	13,075	3,210	2,675
Farm worker/ Farm hand	3,350	9,330	1,915	3,860	2,785	1,110	9,670	1,825	2,965
Waiter, waitress	4,980	7,660	1,530	1,765	2,010	2,115	7,420	1,555	1,290
Maid / Room attendant (hotel)	3,375	7,060	1,665	1,855	2,060	2,115	7,695	1,760	1,610
Care assistants and home carers	2,580	6,880	1,765	1,480	1,570	1,475	6,285	1,225	880
Labourer, building	2,080	5,275	1,510	1,795	1,790	1,805	6,895	1,815	1,685
Sales and retail assistants	2,535	5,405	1,245	1,415	1,720	1,935	6,320	1,510	1,355
Crop harvester	1,235	4,750	450	1,820	1,210	190	3,670	385	1,225
Food processing operative (fruit / veg)	1,600	3,370	640	755	815	705	2,920	410	390
Bar staff	1,950	2,970	550	585	720	645	2,500	580	520
Food processing operative (meat)	1,525	2,555	490	535	790	755	2,570	520	505
Chef, other	1,380	2,400	495	605	605	645	2,350	555	440
Administrator, general	1,000	1,780	395	480	585	450	1,910	365	335
Driver, HGV (Heavy Goods Vehicle)	730	2,215	350	355	420	460	1,595	410	380
Fruit picker (farming)	545	2,305	140	710	600	95	1,540	210	670
Carpenter / joiner	440	1,090	460	410	605	460	1,935	620	480
<b>Total in the top 20 occupations</b>	<b>66,890</b>	<b>168,155</b>	<b>38,220</b>	<b>45,935</b>	<b>52,345</b>	<b>53,950</b>	<b>190,445</b>	<b>40,855</b>	<b>39,545</b>
Other/Not stated	20,160	33,080	8,255	8,555	10,055	9,145	36,010	9,180	8,735

This table shows registered workers rather than the number of applications made. The figures are for initial applications only (not multiple applications, where an individual is doing more than one job simultaneously, or re-registrations, where an individual has changed employers).

The total shown for 2004 is for the part year May to December.

Note: Please see Introduction: Technical Note on WRS data.



## 7. Registered workers' hours of work<sup>9</sup> and wages<sup>10</sup>

- 97% of registered workers who applied between May 2004 and June 2007 were working full time (more than 16 hours a week).<sup>11</sup>
- The majority (77%) of registered workers were earning £4.50 - £5.99 per hour.

## 8. Proportion of registered workers in temporary/permanent employment<sup>12</sup>

- For those who applied in the period from 1 May 2004 to 30 June 2007, 50% of registered workers were in temporary employment and 47% were in permanent employment (3% did not provide this information).
- The proportion of registered workers employed on a temporary or permanent basis varied considerably between sectors. Between May 2004 and June 2007 in agriculture, 70% were in temporary employment and 26% in permanent employment. In hospitality and catering the pattern was reversed, with only 20% in temporary employment and 77% in permanent employment. In administration, business & management 81% were in temporary employment while 59% were in permanent employment in manufacturing.

## 9. Intended Length of Stay

- 56% of registered workers indicated on their application form in the twelve months ending June 2007 that they intended to stay in the UK for less than three months.

**Table 8 – Intended length of stay of registered workers, 1 July 2006 to 30 June 2007**

Intended length of stay	Twelve months ending June 2007	Percentage
Less than 3 months	125,915	56%
3 to 5 months	3,715	2%
6 to 11 months	6,620	3%
1 to 2 years	9,590	4%
More than 2 years	20,220	9%
Do not know	57,815	26%
<b>Total</b>	<b>223,885</b>	<b>100%</b>

Extra care should be taken when using the above data as the applicants' situation may change significantly from the time when the application form is completed, which may affect their continued stay in the UK.

<sup>9</sup> These data are derived from applicants' responses to the question on the WRS application form: *How many hours per week do you normally work?* The Home Office does not verify these responses.

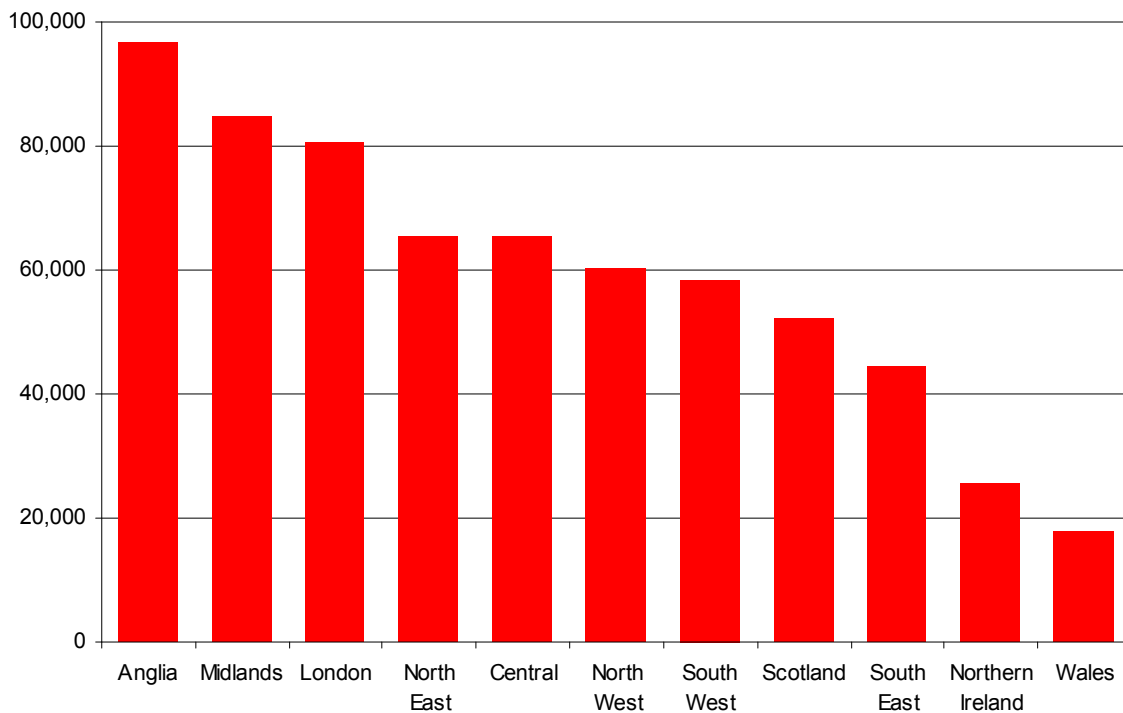
<sup>10</sup> These data are derived from applicants' responses to the question on the WRS application form: *How much is your hourly rate, before deductions?* The Home Office does not verify these responses.

<sup>11</sup> The 97% is likely to be an underestimate. The proportion of registered workers working part time is likely to be lower than 3%, because some were doing more than one part time job, simultaneously. The data published here take account of only one of those jobs – so the total hours an individual was working will in some cases be more than 16.

<sup>12</sup> These data are derived from applicants' responses to the question on the WRS application form: *What type of employment are you undertaking?* (Please indicate by ticking the appropriate box). The Home Office does not verify these responses.

## 10. Geographical distribution of employers of registered workers<sup>13</sup>

Chart 7 – Geographical distribution of employers of registered workers, May 2004 - June 2007



- Between May 2004 and June 2007, Anglia had the greatest number of workers registering with employers in the area, with 15% of the total. This is followed by the Midlands and London, with 13% and 12% of the workers registered.
- Northern Ireland and Wales had the fewest registrations with respectively 4% and 3% of the total.
- The proportion applying to London-based employers, however, fell from 15% in Q1 2005 to just 10% in Q2 2007. At the same time the proportion and number applying to work in most other areas has increased and in the latest quarter the highest proportion of workers (14%) was in the Anglia region, followed closely by the Midlands with just over 13%.

<sup>13</sup> Regions are based on the applicant's employer's postcode, where supplied. Regions are defined according to the Post Office's Postal Address Book regions.

**Table 9 – Geographical distribution of employers of registered workers by quarter and year of application, May 2004 – June 2007**

		Number of registered workers											
Period		Anglia	Midlands	London	North East	Central	North West	South West	Scotland	South East	Northern Ireland	Wales	Total <sup>14</sup>
<b>2004</b>	<b>Total</b>	<b>21,915</b>	<b>11,710</b>	<b>25,470</b>	<b>9,060</b>	<b>13,885</b>	<b>7,675</b>	<b>9,700</b>	<b>8,150</b>	<b>11,200</b>	<b>3,660</b>	<b>2,430</b>	<b>125,880</b>
<b>2005</b>	<b>Total</b>	<b>29,930</b>	<b>26,755</b>	<b>23,460</b>	<b>21,405</b>	<b>20,640</b>	<b>19,135</b>	<b>18,150</b>	<b>15,895</b>	<b>13,670</b>	<b>8,845</b>	<b>5,490</b>	<b>204,965</b>
<b>2006</b>	Q1	6,435	6,325	5,090	5,280	4,975	4,715	3,995	3,485	2,780	2,040	1,415	<b>46,765</b>
	Q2	7,435	7,515	4,940	5,615	5,390	5,470	6,015	5,080	3,340	2,105	1,645	<b>54,900</b>
	Q3	8,600	9,300	5,430	7,170	5,580	6,735	6,165	5,580	3,735	2,305	1,905	<b>62,855</b>
	Q4	9,215	10,005	6,035	7,395	5,365	6,950	5,180	4,910	3,470	2,515	1,910	<b>63,330</b>
<b>2006</b>	<b>Total</b>	<b>31,690</b>	<b>33,150</b>	<b>21,490</b>	<b>25,460</b>	<b>21,310</b>	<b>23,875</b>	<b>21,360</b>	<b>19,050</b>	<b>13,325</b>	<b>8,965</b>	<b>6,875</b>	<b>227,850</b>
<b>2007</b>	Q1	6,755	6,850	5,425	4,995	5,010	4,820	4,390	4,545	3,195	2,340	1,580	<b>50,105</b>
	Q2	6,630	6,385	4,680	4,495	4,495	4,715	4,885	4,765	3,145	1,825	1,370	<b>47,595</b>

This table shows registered workers rather than the number of applications made. The figures are for initial applications only (not multiple applications, where an individual is doing more than one job simultaneously, or re-registrations, where an individual has changed employers).

The total shown for 2004 is for the part year May to December.

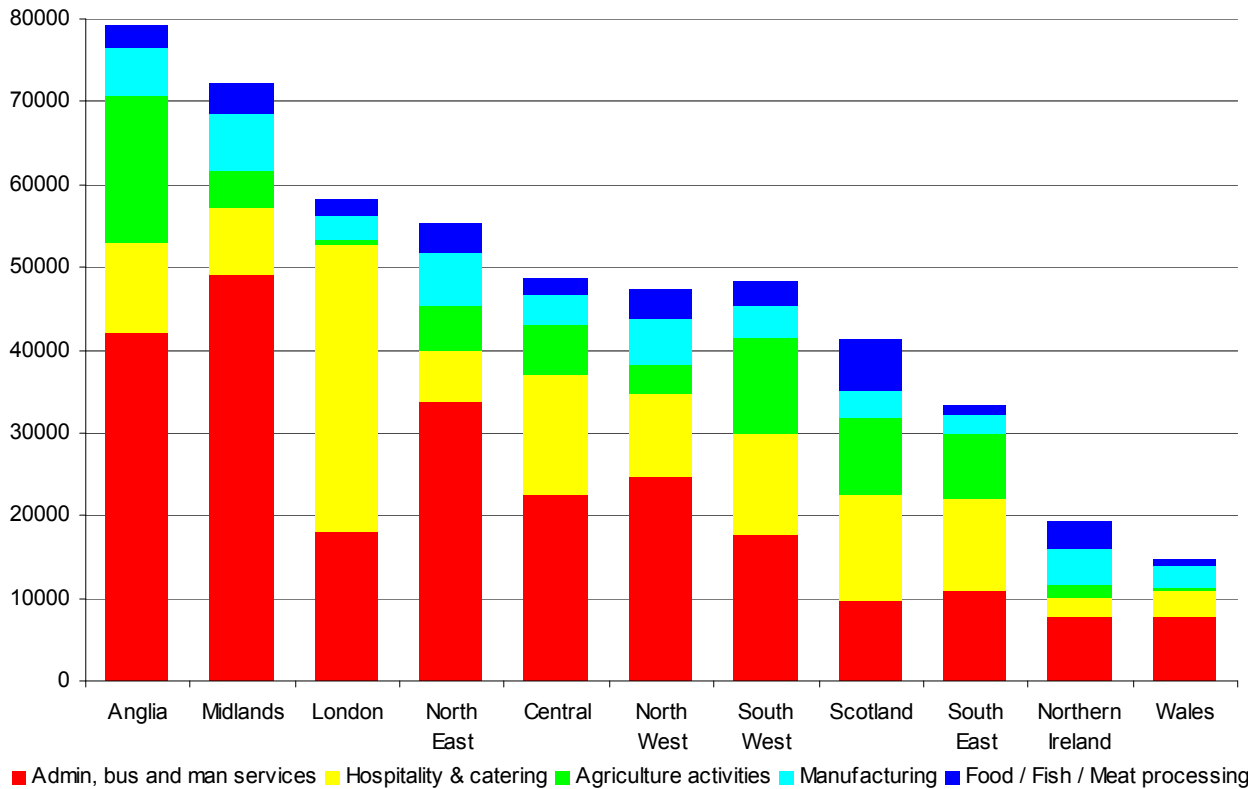
Please note that changes have been made to the way that regional information is recorded by refining the linkage to postcode information to ensure greater accuracy. This has resulted in changes to the data shown under some regions and 'Not stated' since the second Quarter 2004, but does not change the previously published totals.

Note: Please see Introduction: Technical Note on WRS data.

<sup>14</sup> Applicants who did not state a postcode are included in the 'Total' column only.

## 11. Geographical distribution<sup>15</sup> of employers of registered workers by sector<sup>16</sup>

Chart 8 – Top 5 sectors – geographical distribution of employers of registered workers, cumulative total, May 2004 – June 2007



### Regional distribution within sectors

- 27% of those working in hospitality and catering were working for employers in London – far more than in any other region. The next highest proportions were employed in Central England, Scotland and the South West (12%, 10% and 10% respectively).
- 26% of those working in agriculture were working for employers in Anglia, followed by the South West (17%), whereas only 1% was in London and Wales.
- 20% of those working in administration, business and management were working for employers based in the Midlands, followed by 17% in Anglia and 14% in the North East.

### Industrial distribution within regions

- 43% of those working for employers located in London were working in hospitality and catering, 25% in Scotland, 10% each in Northern Ireland and the Midlands and 9% in the North East.
- 58% of those working for employers located in the Midlands were working in administration, business and management (including employment agencies), as were 52% of those in the North East, but only 22% in London and 19% in Scotland.
- 20% of those working for employers in the South West, and 18% in Anglia, the South East and Scotland were working in agriculture.

<sup>15</sup> Regions are based on the applicant's employer's postcode, where supplied. Regions are defined according to the Post Office's Postal Address Book regions.

<sup>16</sup> Not equivalent to the ONS Standard Industry Codes.

**Table 10 – Top 10 Sectors – geographical distribution of employers of registered workers, cumulative total, May 2004 - June 2007**

Period	Number of registered workers											Total <sup>17</sup>
	Anglia	Midlands	London	North East	Central	North West	South West	Scotland	South East	Northern Ireland	Wales	
Admin, Bus & Man Services	42,160	49,170	18,105	33,805	22,380	24,740	17,585	9,705	10,825	7,615	7,735	<b>245,075</b>
Hospitality & Catering	10,860	8,195	34,550	6,105	14,680	9,960	12,320	12,820	11,180	2,440	3,095	<b>127,265</b>
Agriculture Activities	17,895	4,275	690	5,530	5,945	3,585	11,640	9,265	7,970	1,560	500	<b>69,310</b>
Manufacturing	5,580	6,895	3,000	6,260	3,740	5,425	3,820	3,300	2,190	4,405	2,685	<b>47,585</b>
Food / Fish / Meat Processing	2,825	3,690	1,880	3,560	1,865	3,595	3,000	6,315	1,185	3,440	650	<b>32,210</b>
Health & Medical Services	4,040	2,290	3,215	2,615	4,795	2,225	3,130	2,150	3,145	1,080	1,020	<b>29,920</b>
Retail & Related Services	4,625	2,695	6,380	1,865	2,970	2,560	1,715	1,600	2,205	955	475	<b>28,320</b>
Construction & Land Services	2,310	2,130	3,350	1,970	3,310	3,005	1,465	3,735	1,730	2,865	525	<b>26,550</b>
Transport	2,975	2,745	1,480	1,640	1,530	2,350	1,310	1,390	1,345	640	325	<b>17,855</b>
Ent & Leisure Services	1,125	910	1,730	680	1,320	1,385	1,220	635	860	90	395	<b>10,445</b>
<b>Total in top 10 sectors</b>	<b>94,400</b>	<b>82,990</b>	<b>74,380</b>	<b>64,035</b>	<b>62,535</b>	<b>58,830</b>	<b>57,195</b>	<b>50,910</b>	<b>42,635</b>	<b>25,085</b>	<b>17,405</b>	<b>634,540</b>
Others / Not stated	2,520	1,860	6,145	1,380	2,805	1,390	1,290	1,495	1,900	550	340	21,870

This table shows registered workers rather than the number of applications made. The figures are for initial applications only (not multiple applications, where an individual is doing more than one job simultaneously, or re-registrations, where an individual has changed employers).

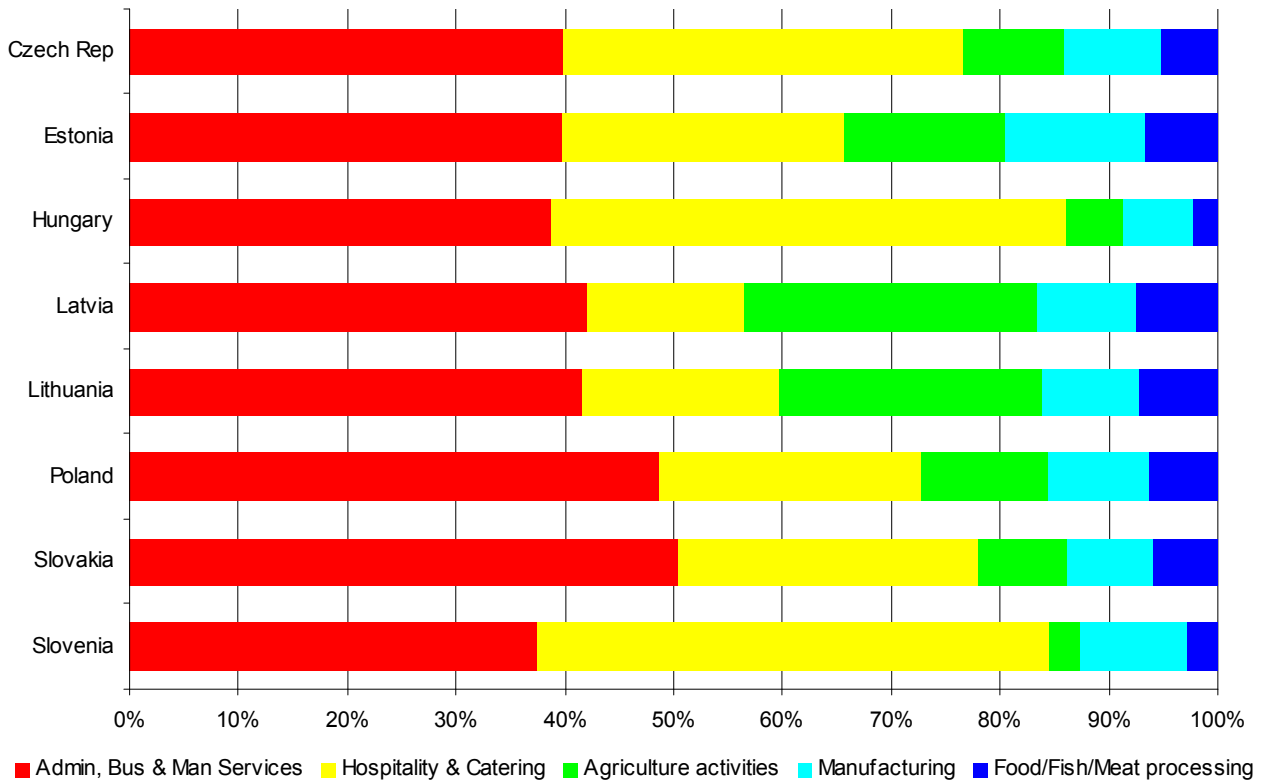
Note: Regions are defined according to the Post Office's Postal Address Book regions. Data are based on employer's postcode, where supplied.

Note: Please see Introduction: Technical Note on WRS data.

<sup>17</sup> Applicants who did not state a postcode are included in the 'Total' column only.

## 12. Nationality of registered workers by sector<sup>18</sup>

Chart 9 – Proportion of registered workers of the top 5 sectors by nationality, May 2004 - June 2007



- A greater proportion of workers from Lithuania and Latvia worked in agriculture than any other nationality. 21% of Lithuanians and 24% of Latvians worked in agriculture compared to 11% of all workers.
- Polish workers made up the largest proportion in every sector, with 67% of administration, business and management services (including employment agencies) and 64% in hospitality and catering. 66% of workers registered with the WRS were Polish.

<sup>18</sup> Not equivalent to the ONS Standard Industry Codes.

**Table 11 – Top 10 Sectors – Nationality of registered workers, cumulative total, May 2004 - June 2007**

Period	Number of registered workers								
	Czech Rep	Estonia	Hungary	Latvia	Lithuania	Poland	Slovakia	Slovenia	Total
Admin, bus & man services	8,840	1,965	5,535	12,920	23,515	165,225	26,940	125	<b>245,065</b>
Hospitality & catering	8,150	1,275	6,760	4,375	10,245	81,470	14,815	160	<b>127,255</b>
Agriculture activities	2,015	735	765	8,285	13,665	39,385	4,385	10	<b>69,250</b>
Manufacturing	2,030	640	915	2,755	5,040	31,865	4,295	35	<b>47,570</b>
Food/fish/meat processing	1,125	325	320	2,320	4,065	21,000	3,100	10	<b>32,260</b>
Health & medical services	2,030	370	1,465	570	1,760	20,210	3,480	40	<b>29,920</b>
Retail & related services	1,580	265	1,150	835	2,080	19,305	3,015	55	<b>28,285</b>
Construction & land services	1,175	205	835	1,010	2,795	18,415	2,075	20	<b>26,535</b>
Transport	870	180	805	275	920	13,935	940	20	<b>17,945</b>
Ent & leisure services	950	140	805	430	835	5,970	1,295	20	<b>10,445</b>
<b>Total in top 10 sectors</b>	<b>28,770</b>	<b>6,105</b>	<b>19,345</b>	<b>33,775</b>	<b>64,920</b>	<b>416,780</b>	<b>64,345</b>	<b>490</b>	<b>634,530</b>
Other Occupations / Not stated	1,870	260	1,600	650	1,515	13,620	2,250	105	21,870

This table shows registered workers rather than the number of applications made. The figures are for initial applications only (not multiple applications, where an individual is doing more than one job simultaneously, or re-registrations, where an individual has changed employers).

Note: Please see Introduction: Technical Note on WRS data.

# NATIONAL INSURANCE NUMBERS

## 13. National Insurance Numbers allocated and purpose of allocation

- Between May 2004 and June 2007, the total number of National Insurance Number applications stood at an overall total of just under 691,000.
- 97.7% of National Insurance Numbers were allocated for employment purposes, 0.9% for benefit purposes and 1.4% for tax credit purposes.
- For the period 1 May 2004 to 30 June 2007, 55.4% of applicants were male and 44.6% were female. The percentage of 18-34 year olds was 82.4%.
- Most applications were from Polish (65.8%), Lithuanian (9.8%) and Slovakian (9.7%) nationals.

**Table 12 – National Insurance Numbers allocated and refused, May 2004 – June 2007**

Period		Total Allocated	Allocated for employment purposes	Allocated for benefit purposes	Allocated for tax credit purposes	Total Refused
2004	Total	63,479	62,539	588	352	1,611
2005	Total	221,818	218,521	1,649	1,648	2,354
2006	Q1	62,075	60,830	359	886	606
	Q2	57,081	55,855	394	832	827
	Q3	71,007	69,613	416	978	1,488
	Q4	76,460	74,611	529	1,320	1,070
2006	Total	266,623	260,909	1,698	4,016	3,991
2007	Q1	71,655	68,782	738	2,135	754
	Q2	57,691	55,592	520	1,849	746
<b>Total</b>		<b>681,536</b>	<b>666,343</b>	<b>5,193</b>	<b>10,000</b>	<b>9,456</b>

Reporting periods are as follows.

- 2004 = 1 May - 31 December 2004.
- 2005 = 1 January 2005 - 31 December 2005.
- Q1 2006 = 1 January - 31 March 2006, Q2 2006 = 1 April - 30 June 2006, Q3 2006 = 1 July - 30 September 2006, Q4 2006 = 1 October – 31 December 2006.
- Q1 2007 = 1 January - 31 March 2007. Q2 2007 = 1 April – 30 June 2007

This Table includes all identified claims from A8 nationals, and is not restricted to those required to register with the WRS.



## 14. National Insurance Number applications by region

Table 13 – National Insurance Numbers allocated and refused by region, May 2004 – June 2007

Region	2004 Total	2005 Total	2006				2006 Total	2007		Total
			Q1	Q2	Q3	Q4		Q1	Q2	
London	20,816	58,197	15,513	13,266	16,168	16,838	61,785	18,858	15,784	175,440
South East	10,645	28,247	8,784	6,522	7,355	8,017	30,678	9,634	7,134	86,338
Scotland	3,701	20,581	4,809	5,840	8,546	8,468	27,663	7,000	6,393	65,338
North West	4,103	20,375	4,514	5,781	7,407	7,492	25,194	7,697	6,489	63,858
East of England	7,175	20,743	6,563	5,948	8,134	7,182	27,827	3,276	2,792	61,813
East Midlands	4,791	20,881	5,466	3,993	5,129	6,180	20,768	5,539	4,375	56,354
West Midlands	4,027	16,055	5,346	4,338	5,771	5,980	21,435	4,820	2,778	49,115
Yorks & Humber	2,467	11,598	3,345	4,733	5,590	5,873	19,541	7,112	6,067	46,785
South West	4,200	14,822	4,377	3,854	3,951	6,436	18,618	3,408	2,137	43,185
Wales	1,605	6,691	1,936	1,342	1,544	2,005	6,827	2,145	1,752	19,020
North East	569	2,782	1,091	1,302	1,518	1,217	5,128	1,206	1,009	10,694
Fast-track <sup>19</sup>	991	3,200	937	989	1,382	1,842	5,150	1,714	1,997	13,052
<b>TOTAL</b>	<b>65,090</b>	<b>224,172</b>	<b>62,681</b>	<b>57,908</b>	<b>72,495</b>	<b>77,530</b>	<b>270,614</b>	<b>72,409</b>	<b>58,707</b>	<b>690,992</b>

Reporting periods are as follows.

- 2004 = 1 May - 31 December 2004.
- 2005 = 1 January 2005 – 31 December 2005.
- Q1 2006 = 1 January - 31 March 2006, Q2 2006 = 1 April - 30 June 2006, Q3 2006 = 1 July - 30 September 2006, Q4 2006 = 1 October - 31 December 2006.
- Q1 2007 = 1 January - 31 March 2007, Q2 2007 = 1 April - 30 June 2007.

Jobcentre Plus is currently divided into the eleven regions shown. A customer's postcode determines to which Jobcentre Plus local office and ultimately region s/he is allocated.

This Table includes all identified claims from A8 nationals, and is not restricted to those required to register with the WRS.

<sup>19</sup> Fast-track applications relate to highly skilled / specialist employment only. Specific regions are unknown.

# BENEFITS AND TAX CREDITS

## 15. Applications for tax-funded, income-related benefits

- Table 14 shows applications for income-based Jobseeker's Allowance, Income Support and State Pension Credit.
- Between May 2004 and June 2007, there were 5,771 applications for Income Support, 10,851 applications for income-based Jobseeker's Allowance and 246 applications for State Pension Credit.
- 3,315 of these applications were allowed on initial decision to proceed for further consideration of whether the claimants meet the other conditions of entitlement. In addition to these, 285 applications were allowed on re-consideration / appeal.
- In all, so far 21.3% of applications have been allowed and the majority (78.7%) were disallowed on the basis of the Right to Reside and Habitual Residence Tests.
- Most applications were from Polish (48%), Czech (13.8%) and Lithuanian (13.3%) nationals.

**Table 14 – Applications for tax-funded, income-related benefits, May 2004 – June 2007**

	2004 total	2005 total	2006				2006 total	2007		Total
			Q1	Q2	Q3	Q4		Q1	Q2	
<b>Applications for Income Support</b>										
Disallowed <sup>20</sup>	204	745	280	355	391	598	1,624	1,020	1,174	4,767
Allowed to proceed for further processing	5	38	62	88	160	180	490	211	260	1,004
<b>Total</b>	<b>209</b>	<b>783</b>	<b>342</b>	<b>443</b>	<b>551</b>	<b>778</b>	<b>2,114</b>	<b>1,231</b>	<b>1,434</b>	<b>5,771</b>
<b>Applications for income based Jobseekers Allowance</b>										
Disallowed <sup>20</sup>	537	1,546	603	833	776	773	2,985	1,574	1,675	8,317
Allowed to proceed for further processing	18	131	158	257	295	362	1,072	637	676	2,534
<b>Total</b>	<b>555</b>	<b>1,677</b>	<b>761</b>	<b>1,090</b>	<b>1,071</b>	<b>1,135</b>	<b>4,057</b>	<b>2,211</b>	<b>2,351</b>	<b>10,851</b>
<b>Applications for State Pension Credit</b>										
Disallowed <sup>20</sup>	4	40	8	20	21	28	77	26	37	184
Allowed to proceed for further processing	0	2	4	5	21	9	39	5	16	62
<b>Total</b>	<b>4</b>	<b>42</b>	<b>12</b>	<b>25</b>	<b>42</b>	<b>37</b>	<b>116</b>	<b>31</b>	<b>53</b>	<b>246</b>
<b>Total disallowed<sup>20</sup></b>	<b>745</b>	<b>2,331</b>	<b>891</b>	<b>1,208</b>	<b>1,188</b>	<b>1,399</b>	<b>4,686</b>	<b>2,620</b>	<b>2,886</b>	<b>13,268</b>
<b>Total allowed to proceed for further processing</b>	<b>23</b>	<b>171</b>	<b>224</b>	<b>350</b>	<b>476</b>	<b>551</b>	<b>1,601</b>	<b>853</b>	<b>952</b>	<b>3,600</b>
<b>Total</b>	<b>768</b>	<b>2,502</b>	<b>1,115</b>	<b>1,558</b>	<b>1,664</b>	<b>1,950</b>	<b>6,287</b>	<b>3,473</b>	<b>3,838</b>	<b>16,868</b>

Reporting periods are as follows.

- 2004 = 1 May - 31 December 2004.
- 2005 = 1 January 2005 – 31 December 2005.
- Q1 2006 = 1 January - 31 March 2006, Q2 2006 = 1 April - 30 June 2006, Q3 2006 = 1 July - 30 September 2006, Q4 2006 = 1 October - 31 December 2006.
- Q1 2007 = 1 January - 31 March 2007, Q2 2007 = 1 April - 30 June 2007.

This Table includes all identified claims from A8 nationals, and is not restricted to those required to register with the WRS.

<sup>20</sup> On the Right to Reside and Habitual Residence tests.

## 16. Nationality of applicants for tax-funded, income-related benefits

Table 15 – Applications for tax-funded, income-related benefits by nationality, May 2004 – June 2007

Period	Czech Rep	Estonia	Hungary	Latvia	Lithuania	Poland	Slovakia	Slovenia	Total
<b>2004</b> Total	<b>246</b>	<b>23</b>	<b>23</b>	<b>42</b>	<b>84</b>	<b>262</b>	<b>82</b>	<b>6</b>	<b>768</b>
<b>2005</b> Total	<b>435</b>	<b>51</b>	<b>117</b>	<b>209</b>	<b>345</b>	<b>1,017</b>	<b>319</b>	<b>9</b>	<b>2,502</b>
<b>2006</b> Q1	171	13	28	93	160	513	130	7	1,115
Q2	201	22	40	132	209	739	206	9	1,558
Q3	225	30	59	102	222	822	196	8	1,664
Q4	234	27	60	174	298	920	232	5	1,950
<b>2006</b> Total	<b>831</b>	<b>92</b>	<b>187</b>	<b>501</b>	<b>889</b>	<b>2,994</b>	<b>764</b>	<b>29</b>	<b>6,287</b>
<b>2007</b> Q1	361	33	107	291	465	1,774	435	7	3,473
Q2	375	59	143	260	547	2,055	390	9	3,838
<b>Total</b>	<b>2,248</b>	<b>258</b>	<b>577</b>	<b>1,303</b>	<b>2,330</b>	<b>8,102</b>	<b>1,990</b>	<b>60</b>	<b>16,868</b>

Reporting periods are as follows.

- 2004 = 1 May - 31 December 2004.
- 2005 = 1 January 2005 - 31 December 2005.
- Q1 2006 = 1 January - 31 March 2006, Q2 2006 = 1 April - 30 June 2006, Q3 2006 = 1 July - 30 September 2006, Q4 2006 = 1 October - 31 December 2006.
- Q1 2007 = 1 January - 31 March 2007. Q2 2007 = 1 April - 30 June 2007.

Jobcentre Plus is currently divided into the eleven regions shown. A customer's postcode determines to which Jobcentre Plus local office and ultimately region s/he is allocated.

This Table includes all identified claims from A8 nationals, and is not restricted to those required to register with the WRS.

## 17. Applications for tax-funded, income-related benefits by region

**Table 16 – Applications for tax-funded, income-related benefits by region, May 2004 - June 2007**

Region	2004 Total	2005 Total	2006				2006 Total	2007		Total
			Q1	Q2	Q3	Q4		Q1	Q2	
London	234	791	314	394	483	640	1,831	912	1,355	5,123
Yorks & Humber	69	280	121	252	212	246	831	403	331	1,914
North West	125	319	141	172	176	184	673	397	386	1,900
South East	85	206	79	138	134	186	537	317	364	1,509
East of England	44	213	101	156	157	147	561	314	303	1,435
East Midlands	32	156	91	117	124	126	458	300	276	1,222
West Midlands	47	174	73	104	140	131	448	274	251	1,194
Scotland	38	141	84	81	105	119	389	190	216	974
South West	22	78	44	42	50	58	194	133	145	572
North East	49	72	34	52	42	79	207	118	102	548
Wales	23	72	33	50	41	34	158	115	109	477
<b>Total</b>	<b>768</b>	<b>2,502</b>	<b>1,115</b>	<b>1,558</b>	<b>1,664</b>	<b>1,950</b>	<b>6,287</b>	<b>3,473</b>	<b>3,838</b>	<b>16,868</b>

Reporting periods are as follows.

- 2004 = 1 May - 31 December 2004.
- 2005 = 1 January 2005 - 31 December 2005.
- Q1 2006 = 1 January - 31 March 2006, Q2 2006 = 1 April - 30 June 2006, Q3 2006 = 1 July - 30 September 2006, Q4 2006 = 1 October - 31 December 2006.
- Q1 2007 = 1 January - 31 March 2007, Q2 2007 = 1 April - 30 June 2007.

Jobcentre Plus is currently divided into the eleven regions shown. A customer's postcode determines to which Jobcentre Plus local office and ultimately region s/he is allocated.

This Table includes all identified claims from A8 nationals, and is not restricted to those required to register with the WRS.

## 18. Applications for Child Benefit

- During the period May 2004 to June 2007, 68% of applications were approved and 19% were rejected.
- There are cases where an application may be processed in a different month to that in which it was received and therefore the number of applications received will not total the number of approved and rejected applications. This is because once a Child Benefit application is made by an A8 national, the Child Benefit Office makes further enquiries about the applicant's date of arrival in the UK and employment status, in order to ascertain whether or not the applicant passes the right to reside test.
- The total number of children involved in applications approved in Quarter 2 2007 was 16,246.

**Table 17 – Applications for Child Benefit, May 2004 – June 2007**

Period		Applications Received	Applications Approved	Applications Rejected <sup>21</sup>	Applications Terminated
<b>2004</b>	<b>Total</b>	<b>5,089</b>	<b>2,086</b>	<b>907</b>	<b>23</b>
<b>2005</b>	<b>Total</b>	<b>22,490</b>	<b>10,363</b>	<b>3,162</b>	<b>197</b>
<b>2006</b>	Q1	10,353	7,710	1,932	182
	Q2	7,063	7,121	1,896	125
	Q3	11,686	8,168	1,930	159
	Q4	12,081	9,804	2,590	113
<b>2006</b>	<b>Total</b>	<b>41,183</b>	<b>32,803</b>	<b>8,348</b>	<b>579</b>
<b>2007</b>	Q1	17,813	12,405	3,308	167
	Q2	14,547	11,270	3,307	144
<b>Total</b>		<b>101,122</b>	<b>68,927</b>	<b>19,033</b>	<b>1,110</b>

This Table includes all identified claims from A8 nationals, and is not restricted to those required to register with the WRS. The Table shows counts of events occurring in each period, not the results of claims arriving in that period. If an A8 national appears in more than one claim then all his/her claims are included in this Table.

The total shown for 2004 is for the part year May to December.

<sup>21</sup> Includes withdrawn claims.

## 19. Applications for Tax Credits

- Between May 2004 and June 2007, 66% of applications for tax credits were approved and 10% were rejected.
- 24% of applications for tax credits are not yet decided as supplementary enquiries need to be made to establish a claimant's right to reside, which will mean that a claim may be decided in a different month to that in which it is received.

**Table 18 – Applications for Tax Credits, May 2004 – June 2007**

Period		Applications Received	Applications Approved	Applications Rejected
<b>2004</b>	<b>Total</b>	<b>940</b>	<b>252</b>	<b>185</b>
<b>2005</b>	<b>Total</b>	<b>7,090</b>	<b>4,544</b>	<b>619</b>
<b>2006</b>	Q1	8,068	6,127	593
	Q2	5,016	3,086	334
	Q3	8,975	3,503	603
	Q4	7,373	5,173	732
<b>2006</b>	<b>Total</b>	<b>29,432</b>	<b>17,889</b>	<b>2,262</b>
<b>2007</b>	Q1	9,476	8,064	1,351
	Q2	11,390	7,829	1,251
<b>Total</b>		<b>58,328</b>	<b>38,578</b>	<b>5,668</b>

This table includes all identified claims from A8 nationals, and is not restricted to those required to register with the WRS. The table shows counts of events occurring in each period, not the results of claims arriving in that period. If an A8 national appears in more than one claim then all his/her claims are included in this table.

The total shown for 2004 is for the part year May to December.

# HOUSING AND HOMELESSNESS SUPPORT

## **20. Local Authority lettings**

Data on local authority lettings to A8 nationals were previously taken from a section added to the P1E form (which is submitted quarterly by local authorities and provides robust data on their actions under homelessness legislation). The section on the allocation of local authority dwellings to foreign nationals was added in April 2005, as an interim measure because this information was not available from other data sources at the time. Prior to this, information on A8 nationals was provided manually by local authorities.

A new data source, the Continuous Recording of Social Lettings (CORE), which is a record of all lettings by housing associations and an increasing number of local authorities, will be used to provide this information in the future. It is more suitable for collecting data on lettings and a question on nationality was added to the CORE form in 2006/07. Data will be available from September 2007.

## 21. Homelessness assistance<sup>22</sup>

- The May 2004 to March 2007<sup>23</sup> total of 2,272 decisions on A8 applications for homelessness assistance represents 0.4% of the total number of homelessness decisions over the 35 month period.

**Table 19 – Decisions on applications for assistance<sup>24, 25</sup>, England, May 2004 – March 2007**

Period		Main duty owed to Applicant	Applicant not owed a main duty	Total
2004	Total	178	277	455
2005	Total	208	385	593
2006	Q1	67	162	229
	Q2	71	153	224
	Q3	91	189	280
	Q4	90	121	211
2006	Total	319	625	944
2007	Q1	98	182	280
<b>Total</b>		<b>803</b>	<b>1,469</b>	<b>2,272</b>

The total shown for 2004 is for the part year May to December.

This Table includes all identified claims from A8 nationals, and is not restricted to those required to register with the WRS.

- The May 2004 to March 2007<sup>23</sup> total of 803 A8 acceptances represents 0.3% of the total number of acceptances of homelessness applications over the 35 month period.

**Table 20 – Homeless households owed a main duty<sup>25</sup> by reason for eligibility, England, May 2004 – March 2007**

Period		Currently legally employed	Self-employed/ provider of services	Recipient of services <sup>26</sup>	Other	Total
2004	Total	123	6	2	47	178
2005	Total	152	5	2	49	208
2006	Q1	48	0	0	19	67
	Q2	52	1	-	18	71
	Q3	76	2	-	13	91
	Q4	73	1	-	16	90
2006	Total	249	4	0	66	319
2007	Q1	83	7	-	8	98
<b>Total</b>		<b>607</b>	<b>22</b>	<b>4</b>	<b>170</b>	<b>803</b>

The total shown for 2004 is for the part year May to December.

This Table includes all identified claims from A8 nationals, and is not restricted to those required to register with the WRS.

All data in tables 19 and 20 are provisional.

<sup>22</sup> Estimates ARE made for non-response by Local Authorities on homelessness assistance.

<sup>23</sup> Data currently collected on Communities and Local Government's P1E form, and only available up to March 2007.

<sup>24</sup> Under the homelessness provisions of the 1985 and 1996 Housing Acts.

<sup>25</sup> 'Main duty owed' means that the local authority is required to secure accommodation for applicant and their household.

<sup>26</sup> No longer valid after Q2 2006.



# ANNEX A

## ALL OCCUPATIONS IN WHICH REGISTERED WORKERS ARE EMPLOYED, TOTAL JULY 2004-JUNE 2007 (MAY AND JUNE 2004 UNAVAILABLE)

Occupation (In alphabetical order)	Total July 2004 to June 2007
Accountant, certified	35
Accountant, chartered	10
Accountant, financial	185
Accountant, trainee	195
Actor	5
Actuary	10
Administrator (utilities)	40
Administrator / receptionist, medical	290
Administrator, (government & related)	55
Administrator, comms / marketing / advertising	545
Administrator, finance	1,040
Administrator, financial services	290
Administrator, general	5,385
Administrator, hospital	70
Administrator, Human Resources	520
Administrator, IT	470
Administrator, office	2,140
Administrator, records	400
Administrator, sports and leisure	145
Administrator, university	85
Agricultural machinery operator	1,330
Air Steward / Stewardess	280
Airport staff	445
Alternative/complementary medicine specialist	20
Anaesthetist	140
Animal husbandry	725
Architect	365
Architectural Technician	415
Artist / sculptor	90
Arts officer, Producers or Director	60
Auditor	50
Author, writer	10
Baker	2,840
Bank Manager	15
Banker, Business	30
Banker, International	20
Banker, Investment	45

Banker, Merchant	5
Banker, Personal	20
Bar staff	8,520
Barrister	35
Beautician	225
Bricklayer / mason	1,560
Butcher / Meat cutter	2,455
Call centre agent / operator	785
Camera person / Photographer	60
Care assistants and home carers	17,845
Caretaker, school	110
Carpenter / joiner	4,560
Caseworker (legal)	10
Cashier (bank, building society)	155
Cashier / check-out operator	1,810
Caterer, higher education	15
Caterer, school	55
Chef, head	585
Chef, other	7,130
Chef, second	340
Chemical Engineer	195
Childminders and related occupations	1,135
Chiropodist	†
Circus performer	15
Circus Rigger	80
Civil engineer	560
Cleaner, domestic staff	33,515
Cold store operative	85
Conductor (railways)	15
Conductor, bus	30
Construction materials delivery	160
Constructor, road	265
Constructor, roofing	260
Constructor, steel	925
Consultant, hospital	210
Dancer or choreographer	15
Deliveryman	430
Dental Hygienist	60
Dental Nurse	335
Dental practitioner	355
Detention / Custody guard /officer	10
Dietician	†

Director / Senior executive	200
Dock Worker	60
Doctor (hospital)	635
Driver, bus	2,925
Driver, coach	180
Driver, crane	80
Driver, delivery van	4,120
Driver, fork-lift	915
Driver, HGV (Heavy Goods Vehicle)	5,330
Driver, PCV (Passenger Carrying Vehicle)	1,140
Driver, taxi	80
Driver, train	5
Driver, underground	†
Electrician	675
Engineer, electrical	240
Engineer, gas	20
Engineer, hardware (computer)	290
Engineer, oil and natural gas	95
Engineer, other transport related	470
Engineer, railway	70
Engineer, software	565
Engineer, water	25
Entertainer	405
Farm worker / Farm hand	27,135
Financial Adviser	135
Financial Consultant	185
Fisherman	55
Fishmonger / filleter / gutter	1,160
Fitness coach	100
Floorer and wall tiler	225
Flower picker	1,210
Food processing operative (fruit / veg)	8,690
Food processing operative (meat)	7,670
Foreign language teacher (private)	30
Forestry workers	160
Fruit picker (farming)	5,270
Gardener / landscape gardener	1,970
General Practitioner	110
Groundsman	605
Hairdresser or related occupation	420
Handyman, general (building and contracting)	2,155

Hotel porter	3,630
Interpreter	30
IT strategy and planning professionals	190
Kitchen and catering assistants	36,525
Laboratory assistant	345
Labourer, building	17,750
Launderer, dry cleaner, presser	3,130
Lawyer / Solicitor	45
Legal Clerk	45
Legal secretary	30
Leisure and theme park attendants	2,410
Leisure and travel service occupations	720
Lifeguard	90
Maid / Room attendant (hotel)	21,500
Maintenance (electrical)	225
Maintenance (gas)	15
Maintenance (water/sewage)	25
Management Accountant	45
Manager, bar	165
Manager, care home	30
Manager, catering	415
Manager, customer care	250
Manager, entertainment /arts /leisure	95
Manager, farm	50
Manager, financial	220
Manager, health and social services	70
Manager, hotel	210
Manager, Human Resources / Training	165
Manager, IT	100
Manager, office	560
Manager, other hospitality	375
Manager, quality	155
Manager, restaurant	275
Manager, retail	475
Manager, safety and hygiene	60
Manager, utilities	20
Market and street traders and assistants	60
Mechanic	2,635
Mechanical Engineer	870
Merchandisers and window dressers	130
Midwife	5

Musicians	65
Nurse	325
Nursery nurse	460
Nursing auxiliaries and assistants	445
Optician	50
Packer	37,380
Painter and decorator	1,480
Personal Assistant	740
Pharmacist / Pharmacologist	485
Physiologist	10
Physiotherapist	55
Pilot (aircraft)	5
Plasterer	375
Playgroup leader / assistant	235
Plumbers, heating and ventilating engineer	430
Policeman/woman	†
Power station staff	20
Prison Officer	5
Process operative (electronic equipment)	3,060
Process operative (other Factory worker)	163,150
Process operative (Textiles)	2,530
Process operative (Vehicle manufacturing)	1,015
Production Manager	185
Programmer, computer	400
Property sales and lettings	115
Psychiatrist	45
Psychologist	10
Purchaser (retail trade)	200
Receptionist (office)	1,105
Receptionist, hotel	1,760
Refuse and salvage occupation	965
Researcher (medical)	275
Researcher, higher education	390
Residential wardens and Houseparents	180
Retailer	445
Road sweeper	485
Rofer, roof tiler and slater	145
Sales and retail assistants	17,125
School secretary	30
Secretary	380
Secure delivery worker	45

Security Guard	1,910
Senior manager	60
Sewage Worker	20
Shelf stacker	395
Ship hand	75
Ship's Captain	5
Site manager (construction)	165
Site Manager (extraction industry)	10
Site supervisor (construction)	210
Site Supervisor (extraction industry)	20
Skilled machine operator (construction)	1,185
Skilled machinery operator (extraction)	450
Skilled vehicle operator (construction)	110
Slaughterer, meat	350
Social Worker	330
Software analyst	195
Sports and leisure assistants	710
Sports coach	25
Sports Manager	†
Sportsperson (professional)	65
Steward / Stewardess (ferry/shipping)	70
Supervisor (gas/water/electric)	10
Supervisor, door /bouncer	55
Supervisor, production	475
Supervisor, retail	310
Supplier, construction materials	60
Surgeon	65
Surveyor	160
Systems analyst	190
<hr/>	
Teacher, higher education	210
Teacher, primary and nursery education	140
Teacher, secondary education	115
Teacher, special needs education	70
Teacher's assistant	740
Technician, medical	215
Telecommunications administrator	95
Telecommunications Engineer	165
Telecommunications Manager	15
Telecommunications Supervisor	10
Telephone salesperson	130
Telesales Supervisor	25
Ticketer and station attendants	135
Translator	100

Tutor (private)	40
Typist	80
Veterinarian	135
Waiter, waitress	22,905
Ward Sister	10
Warden (care home)	50
Warehouse manager	255
Warehouse Operative	47,230
Warehouse Supervisor	435
Water works staff	25
Welder	4,085
Wholesaler	30
Window cleaner	125
Worker, gas	5
Worker, oil	20
Not Stated	10,710
<b>Total</b>	<b>617,565</b>